

PROTOTYPE WINTER SERIES 2024 Race 1

Autódromo do Estoril - Alcabideche 11.-14.01.2024

Date: 12.01.2023

Time 18:15

Drivers & Team Managers Briefing

Based on timetable issued December 2023

From: The Race director (Briefing notes)
 To: All drivers and competitors
 Cc: The Stewards of the meeting, the clerk of the course
 The secretary of the meeting

DRIVERS and TEAM MANAGERS BRIEFING

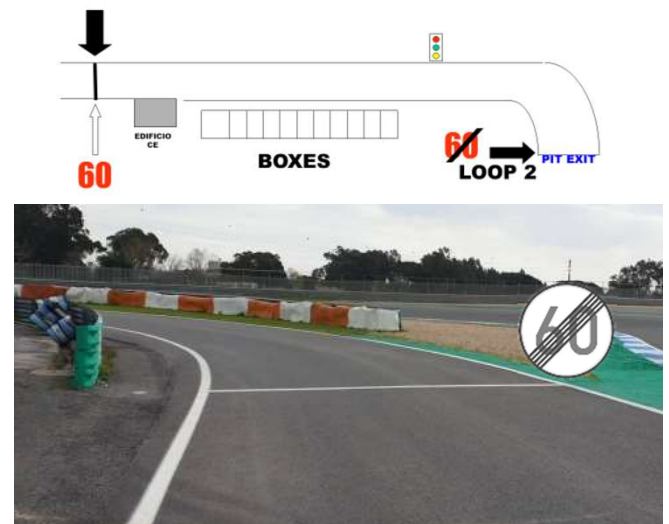
SATURDAY	13.01.2024	SATURDAY	13.01.2024
Free Practice	09:35 – 10:00	RACE 1: 55min.	Pit lane closed: 15:00
Qualifying 1	11:35 – 11:50		Formation lap: 15:05 Green
Qualifying 2	11:55 – 12:10	SUNDAY	14.01.2024
For both Races Pit stop is mandatory		RACE 2: 55min.	Pit lane closed: 10:05
			Formation lap: 10:10 Green

CIRCUIT INFORMATION

Lap length	: 4.183 m	SC line 1	: before pit entry
Pole position	: right side (Rolling-Start)	SC line 2	: at the end of the pit exit
Speed limit pit lane	: 60 km/h	SC initial position	: near the end of the pit building
Start and finish line	: NOT the same	SC lights off	: around T11
		By Red flag go to	: pit lane, line up on fast lane

EVENT NOTES

Green light at Pit Exit will start Qualifying and opens the Pre Grid to drive on the track..



When you are leaving the pit exit after Turn 1 (2. SC Line) stay on the right side of the track.

In case of a YELLOW flag all drivers must reduce the speed immediately. It is not allowed to overtake. Any overtaking manoeuvre must be finished at the height of the yellow flag.

In case of a RED flag during practice all drivers must reduce the speed immediately and drive to the Pit Lane. It's not allowed to overtake. **You have to slow down significantly!** All cars have to stay in position and drive carefully. Technical assistance in Pit Lane is allowed. Restart will be by green light at the pit exit.

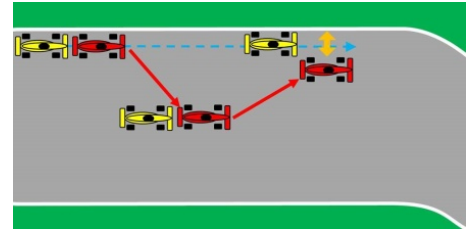
Respect at every time the track limits. Leaving the track with advantage will be penalized. All drivers are reminded to Appendix L (IV, 2c-d) of the ISC.

Any exceptions will be discussed in the Driver`s Briefing.

More than one change of direction to defend a position is not permitted, weaving in front of another car is forbidden.

See Appendix L (IV, 2b) ISC

Any driver moving back towards the racing line, having earlier defended his position off-line, must leave at least one car width between his own car and the white line at the edge of the track



Signals to drivers (Black, Black/White, Black with orange disc and boards) will be given right hand side at the timing line in front of the race tower.

At the end of the qualification all cars return to the pit lane and are under Parc Fermé conditions. The location of the Parc Fermé area will be announced in the Driver's Briefing.

STARTING PROCEDURE

Cars have to line up in Pit Lane in front of the pits in an angle of 45° to the right. After opening the Pit exit (10min board) all cars drive **one** lap to the starting line. **Pole Position is on RIGHT SIDE.** When you reach your grid position you have to stop the engine immediately.

Overtaking during the formation lap is only permitted if a car is delayed when leaving its grid position and cars behind cannot avoid passing. In this case, drivers may only overtake carefully to re-establish the original starting order. Any driver who is delayed leaving the grid in the **last** position may not overtake another moving car and must start the race from the back.

The GRID board will be displayed left hand side at the exit of Turn 10 at marshal post F10B.

From the GRID board onwards, cars must maintain the 2x2 formation of the starting order until the start is released (green light). Warming up the tires by waving **after** the GRID board is not allowed. All cars have to keep the speed, to stay in the formation and to drive **in two rows over the respective grid boxes** until the red lights turn to green. Then overtaking immediately is allowed.

FULL COURSE YELLOW (FCY)

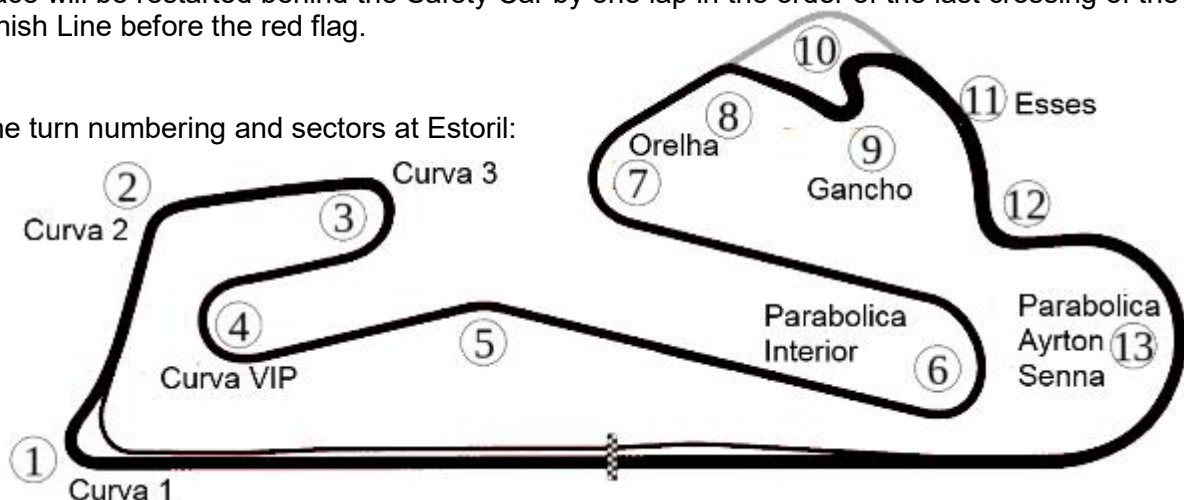
We will use FCY only in Qualifying to save time. All Marshals will show yellow flags together with FCY-boards at the same time. NO overtaking, reduce speed immediately to 80 km/h and keep the distances. Restart by pulling down flags and boards and replacing by green flags at the same time.

SUSPENDING A RACE

All marshals will wave red flags; additional red lights can be shown at the start/finish straight. NO OVERTAKING, all cars stay in position, reduce speed and drive carefully to the Pit Lane and line up on the fast lane. **The moment you see the flag you have to slow down significantly.** The first arriving car stops at the level of the last pit box (end of pit building), all other cars line up behind in one row.

Race will be restarted behind the Safety Car by one lap in the order of the last crossing of the Finish Line before the red flag.

The turn numbering and sectors at Estoril:



TIME SCHEDULE START RACES

Prototype Winter Series – Race 1

14:55	Pre-Grid opens to cover one reconnaissance lap into the grid
14:55	10 minutes board/lights
15:00	5 minutes board/lights - Pit exit closed
15:02	3 minutes board/lights
15:04	1 minute board/lights
15:04.45	15 seconds board/lights
15:05	green flag /light– start of formation lap
15:10	start race – 55 min. (50min.+1 lap) (75%: 41 minutes)

Prototype Winter Series – Race 2

10:00	Pre-Grid opens to cover one reconnaissance lap into the grid
10:00	10 minutes board/lights
10:05	5 minutes board/lights - Pit exit closed
10:07	3 minutes board/lights
10:09	1 minute board/lights
10:09.45	15 seconds board/lights
10:10	green flag/light – start of formation lap
10:15	start race – 55 min. (50min. + 1 lap) (75%: 41 minutes)

For both races: Driver change allowed between **the 20th** and **the 30th** minute.
86 seconds mandatory pit stop time for all cars

During the pit stop time(s) take care of Art.45.4 of your regulations (Safety Car).

SAFETY CAR

The safety car procedure will be like detailed in Art.2.10 Appendix H – ISC. All marshals will wave yellow flags and show SC boards. Safety car will join the track at the pit exit with illuminated lights. All competing cars will form up in line behind the safety car. Overtaking is forbidden.

The race leading driver is asked to collect the other participants behind him to let the SC take position before him. This avoids sorting of cars and leads to a fast ending of the SC action.

The race leader must follow within 5 cars length behind the SC and all remaining cars among themselves too. They must keep the formation as tight as possible.

If the leading race car is not behind the SC and when ordered to do so by the Race Director, the observer in the SC will use the green light on the car or his arm to signal any car behind the SC and the race leader, that they should pass the SC. These cars will continue at reduced speed and without overtaking until they reach the line of cars behind the safety car.

Drivers may not carry out a drive-through penalty or the mandatory pit stop after the SC has been deployed. Any lap behind the SC will be counted as a race lap.

When the race director calls in the SC, it will extinguish the lights around T11 and leave the track at the end of that lap turning right side into the pit lane. When the lights are off, the leading race car may control the pace and fall more than 5 cars length behind the SC.

Overtaking remains strictly forbidden until the cars pass the green flag at the Finish Line.

