

## Prototype WINTER SERIES 2024 Race 3

Motorland Aragon

29.02.-03.03.2024

Date: 01.03.2024

Drivers Briefing

Time: 16:00

Based on timetable issued 05.02.2024

From: The Race director (Briefing notes)  
To: All drivers and competitors  
Cc: The Stewards of the meeting, the clerk of the course  
The secretary of the meeting

### DRIVERS and TEAM MANAGERS BRIEFING

#### SATURDAY 02.03.2024

Free Practice 11:40 – 12:00

Qualifying 1 14:20 – 14:35

Qualifying 2 14:40 – 14:55

For both Races **Pit stop is mandatory**

#### SATURDAY 02.03.2024

RACE 1: 50min.+1 lap Pit lane closed: 18:50  
Formation lap: 18:55 **Green**

#### SUNDAY 03.03.2024

RACE 2: 50min.+1 lap Pit lane closed: 12:40  
Formation lap: 12:45 **Green**

#### CIRCUIT INFORMATION

Lap length : 5.345 m  
Pole position : left side (Rolling-Start)  
Speed limit pit lane : 60 km/h  
Start and finish line : NOT the same

SC line 1 : before of pit entry  
SC line 2 : at the end of the pit exit line  
SC initial position : pit exit left side  
SC lights off : after Turn 15

#### EVENT NOTES

All cars will be in the pits.

Green light at Pit Exit will start Qualifying and opens the Pre-Grid.



When you are leaving the pit exit respect the white line at the left side to its end.

In case of a YELLOW flag all drivers must reduce the speed immediately. It is not allowed to overtake. Any overtaking manoeuvre must be finished at the height of the yellow flag.

In case of a RED flag during practice all drivers must reduce the speed immediately and drive to the Pit Lane. It's not allowed to overtake. **You have to slow down significantly!** All cars have to stay in position and drive carefully. Technical assistance in Pit Lane is allowed. Restart will be by green light at the pit exit.

Respect at every time the track limits. Leaving the track with advantage will be penalized. All drivers are reminded to Appendix L (IV, 2c-d) of the ISC. Repeat violations will be penalized.

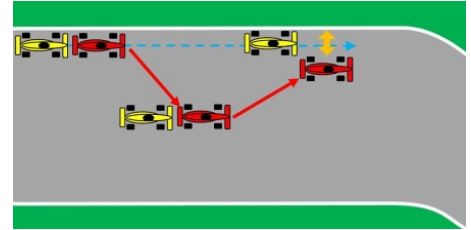
Any exceptions will be discussed in the Driver's Briefing.

Signals to drivers (Black, Black/White, Black with orange disc and boards) will be given at the signalling podium left hand side in front of the race tower.

More than one change of direction to defend a position is not permitted, weaving in front of another car is forbidden.

See Appendix L (IV, 2b) ISC

Any driver moving back towards the racing line, having earlier defended his position off-line, must leave at least one car width between his own car and the white line at the edge of the track



At the end of the qualification all cars return to the pit lane and are under Parc Fermé conditions. The location of the Parc Fermé area will be announced in the Driver's Briefing.

## **STARTING PROCEDURE**

Cars have to line up in the Pit Lane in front of the pits in an angle of 45° to the left. After opening the Pit exit (10min board) all cars drive **one** lap to the starting line.

**Pole Position is on the LEFT SIDE.** When you reach your grid position you have to stop the engine immediately.

Overtaking during the formation lap is only permitted if a car is delayed when leaving its grid position and cars behind cannot avoid passing. In this case, drivers may only overtake carefully to re-establish the original starting order. Any driver who is delayed leaving the grid in the **last** position may not overtake another moving car and must start the race from the last position.

**For Safety Reason you will have two Formation Laps** to war up the tyres properly.

The GRID board will be displayed between T15 and T16 at the marshal post right hand side.

From the GRID board onwards, the cars must maintain the 2x2 formation of the starting order until the start is released (green light). **Warming up the tires by waving after T16 is not allowed.** All cars have to keep the speed, stay in the formation and to drive **in two rows over the respective grid boxes** until the red lights turn to green. Then overtaking immediately is allowed.

## **FULL COURSE YELLOW (FCY)**

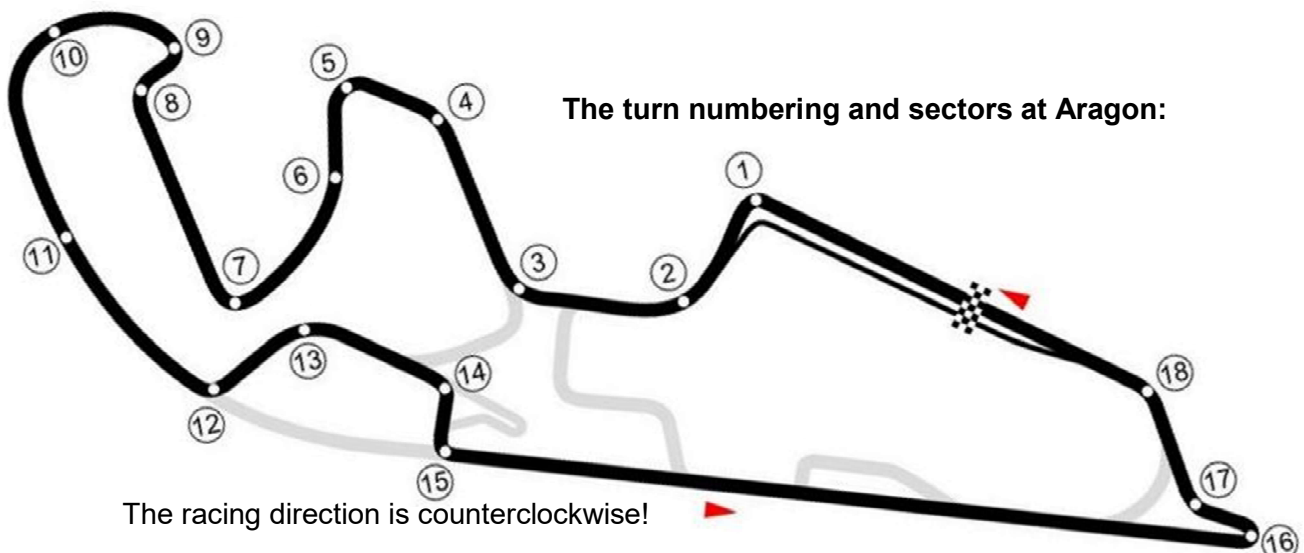
We will use FCY in Qualifying and Race(s). All Marshals will show yellow flags together with FCY-boards at the same time. NO overtaking, reduce speed immediately to 80 km/h and **keep the distances**. Restart by pulling down flags and boards and replacing by green flags at the same time.

## **SUSPENDING A RACE**

All marshals will wave red flags; additional red lights can be shown at the finish line.

NO OVERTAKING, all cars stay in position, reduce speed and drive carefully to the Pit Lane and line up on the fast lane. **The moment you see the flag you have to slow down significantly.**

The first arriving car stops about 10m before the pit exit light, all other cars line up behind in a row. Race will be restarted behind the Safety Car by one lap in the order of the last crossing of the Line before the red flag.



## TIME SCHEDULE START RACES

### Prototype Winter Series – Race 1

18:45	Pre-Grid opens to cover <b>one reconnaissance lap</b> into the grid
18:45	10 minutes board/lights
18:50	5 minutes board/lights - Pit exit closed
18:52	3 minutes board/lights
18:54	1 minute board/lights
18:54.45	15 seconds board/lights
18:55	green flag /light– start of formation lap (2 laps)
19:00	start race – 53 min. (50min. + 1 lap) (75%: 40 minutes)

### Prototype Winter Series – Race 2

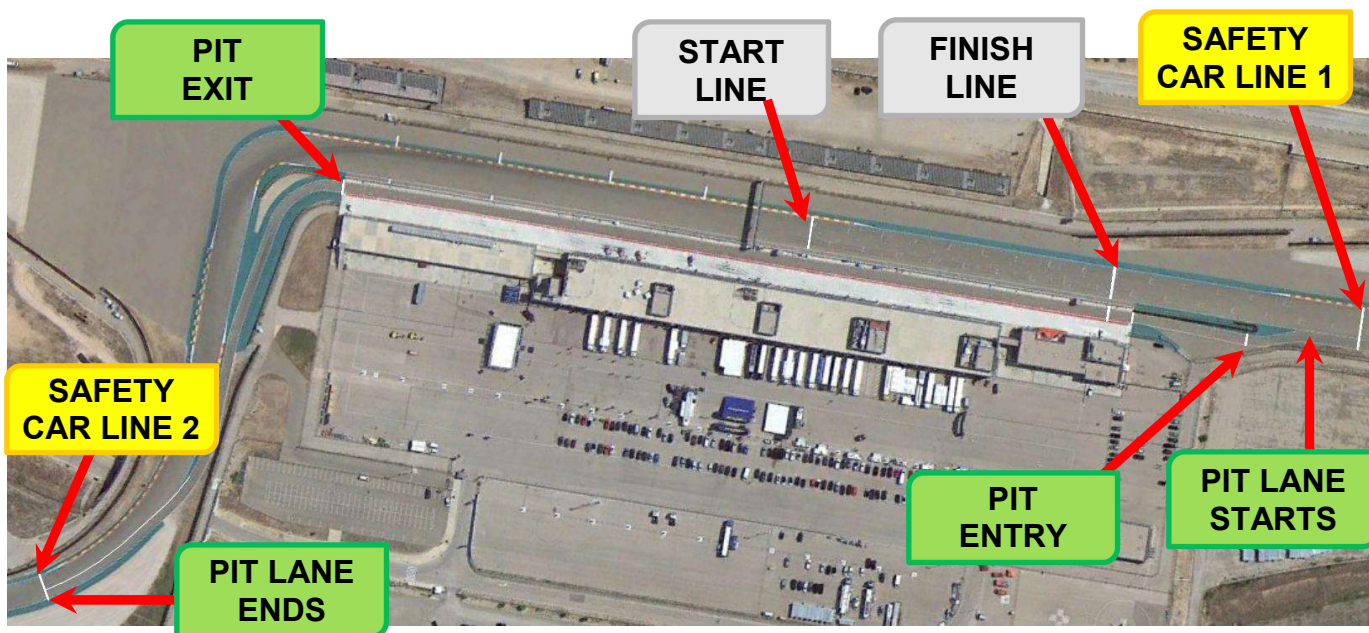
12:35	Pre-Grid opens to cover <b>one reconnaissance lap</b> into the grid
12:35	10 minutes board/lights
12:40	5 minutes board/lights - Pit exit closed
12:42	3 minutes board/lights
12:44	1 minute board/lights
12:44.45	15 seconds board/lights
12:45	green flag/light – start of formation lap (2 laps)
12:50	start race – 53 min. (50min. + 1 lap) (75%: 40 minutes)

**For both races:** Driver change allowed between **the 20<sup>th</sup>** and **the 30<sup>th</sup>** minute.  
**76 seconds mandatory pit stop time for all cars**

While the Safety Car is in operation, competing cars may enter the Pit Lane (see. Art.45.4) **but changing the driver and carrying out the mandatory pit stop is forbidden.**

## SAFETY CAR

The safety car procedure will be like detailed in Art.2.10 Appendix H – ISC. All marshals will wave yellow flags and show SC boards. Safety car will join the track at the pit exit with illuminated lights. All competing cars will form up in line behind the safety car. Overtaking is forbidden.



**Important notice:** Beside the track the most secure place is in your car. Caution in getting out. After a heavy accident stay in your car. Do not attempt to leave it on your own. Wait for the arrival of the doctor and if necessary the extrication team We will take care of you